

HardReset.info:

Hard Reset JBL Link 10

How to **factory reset JBL Link 10**? How to **wipe all data** on **JBL Link 10**? How to **restore default settings** on **JBL Link 10**?

If you're experiencing problems with your **JBL Link 10** or you just want to reset the paired devices list this tutorial will show you how to perform a **Hard Reset** on your **JBL Link 10**.

1. In the beginning, turn the device on by pressing and holding the **Power button**.



HARDRESET
INFO

2. Next press and hold the **Mute button** for about 13-15 seconds.



HARDRESET
INFO

3. Once the device turns off, turn it back on by pressing the **Power button**.



4. Once the device turns on it should be in the pairing mode.

HARDRESET
INFO

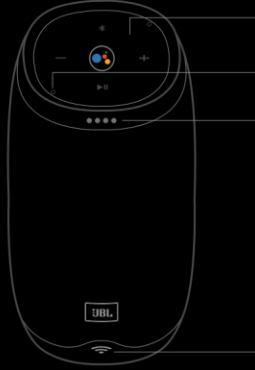
5. Good job! The **Hard Reset** is complete.



Link 10



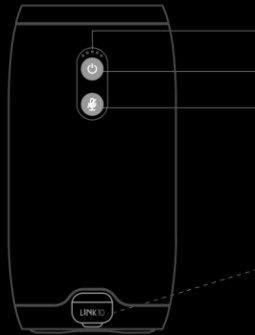
Front



Top



Back



Micro USB cable



Microphone

Lights when active

Wi-Fi status indicator

Google, Google Play, Chromecast, Chromecast built-in, Google Home and other related marks and logos are trademarks of Google Inc.

Chromecast built-in may require subscription(s).

* Requires compatible device. Availability and performance of certain other features and services are service, device and network-dependent and may not be available in all areas; subscription(s) may be required, and additional terms, conditions and/or charges may apply.

The Bluetooth® word mark and logos are registered trademarks owned by Bluetooth SIG, Inc. and any use of such marks by HARMAN International Industries, Incorporated is under license. Other trademarks and trade names are those of their respective owners.

This equipment complies with FCC/IC RSS-102 radiation exposure limits set forth for an uncontrolled environment. This equipment should be installed and operated with minimum distance 20cm between the radiator & your body.

TR03992_F

Get Started



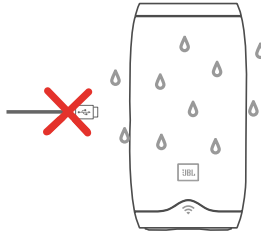
IPX 7 Waterproof

1. JBL Link 10 is IPX7 waterproof.

IPX7 waterproof is defined as the speaker can be immersed in water up to 1m for up to 30 minutes.

Press to power on **IMPORTANT:** To ensure that the JBL Link 10 is waterproof, please remove all cable connections and tightly close the cap; exposing the JBL Link 10 to liquids without doing so may result in permanent damage to the speaker. And do not expose JBL Link 10 to water while charging, as doing so may result in permanent

damagetothespeakerorpowersource.



Download and

2.

run the Google Home app on a phone or tablet.
Set up your JBL Link 10 in the Google Home app.



Q Google Home

Specification

- Transducer: 2 x 40mm
- Output power: 2 x 8W
- Frequency response: 65Hz-20kHz
- Signal-to-noise ratio: >80dB
- Battery type: Lithium-ion Polymer (3.7V, 4000mAh)
- Battery charge time: 4 hours @5V 1A
- Music play time: up to 5 hours (varies by volume level and content)
- Wireless network: 802.11b/g/n/ac (2.4/5GHz)
- Bluetooth version: 4.2
- Supported audio formats: HE-AAC, LC-AAC, MP3, Vorbis, WAV (LPCM), FLAC, Opus
- Dimensions (Dia x H): 86 x 169 mm
- Weight: 710g